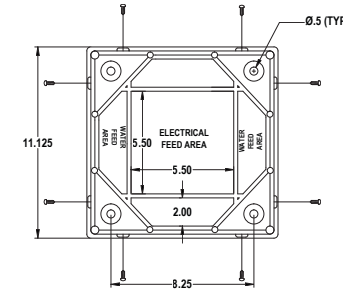




HARBOR LIGHT SS

Power Pedestal Model HLSS30100

Marina Electrical Equipment has performed extensive research and design to create the most innovative and user-friendly power pedestal, the "Harbor Light SS." This pedestal truly represents modernization, and ease-of-use. We have taken all that we have learned over the past 30+ years in this business to create a power pedestal that is exceptionally durable, practical, and clean-looking, as well as simple to install and maintain.



STANDARD DIMENSIONS: 42.5"H 11.125"W 11.125"D

STANDARD FEATURES

- Intertek-ETL Listed, tested in accordance with Underwriters Laboratories-231 standards, CAN/CSA Standard C22.2 No.29 and NFPA 303.
- Rugged, long-lasting 16-gauge 316L stainless steel NEMA 3RX main housing.
- Heavy-duty .1875" thick injection-molded polycarbonate top and lens assemblies.
- Limited 1-Year Warranty.
- Extra wide back-lit receptacle faceplate for easier plug-in.
- Highest quality twist-lock receptacles & circuit breakers.
- Highest quality 100-amp pin and sleeve receptacles (when 100-amp receptacles are selected).
- Patented pivoting receptacle faceplate assembly, which simplifies field-maintenance tasks such as replacing circuit breakers, receptacles or meter current transformers.
- Photocell-controlled LED light fixture with fuse protection.
- 250-Amp rated copper stud-lug single phase 125/250V terminal block.
- Clean-looking flush-mounted access panels.
- Newly designed, highly functional dual hose/cable brackets, capable of holding min. 50' of standard 5/8" ID garden hose or 50' of 50-ampere, 4-wire shore power (S.O.) cord.
- Durable polycarbonate mounting base plate which isolates the bottom housing from the dock surface.
- Lockable polycarbonate weatherproof doors which shield the receptacles and circuit breakers from the elements while in use (as required by NFPA 303 and NEC Article 555).

OPTIONAL FEATURES

- Receptacle Options:
 - 20A, 125V Duplex GFCI.
 - 20A, 125V L5-20R Twist-Lock Shorepower.
 - 30A, 125V L5-30R Twist-Lock Shorepower.
 - 50A, 125V SS-1 Twist-Lock Shorepower.
 - 50A, 125/250V SS-2 Twist-Lock Shorepower.
 - 100A, 125/250V Pin and Sleeve Shorepower.
 - 100A, 125/250V Pin and Sleeve Shorepower.
 - 100A, 480V Pin and Sleeve Shorepower.
- Interlocking circuit breakers, ground fault circuit breakers.
- Solid-state electric monitoring for sub-metering kWh consumption.
- Wireless NUCORE™ remote meter reading.
- Ground Fault Monitoring at each slip (patented).
- 250-Amp rated copper stud-lug three phase 125/250V terminal block.
- 250-Amp rated split terminal block.
- 3/4" IPS ball valve hose bibs.
- Hose bib vacuum breakers.
- Water metering.
- Phone, Cable TV, and/or Data ports.
- Amber or Clear Polycarbonate Lens.

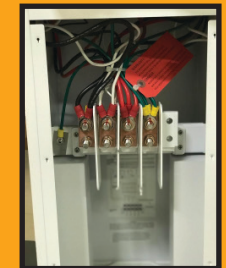
Harbor Light Mounting Detail



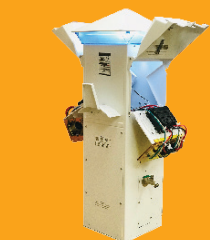
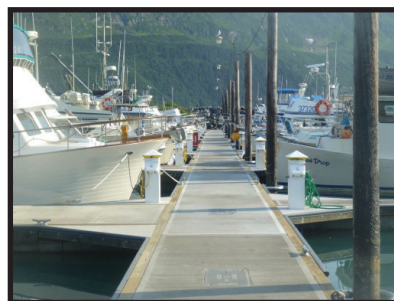
Protected kWh Counter



Extra-Wide Back-Lit Receptacle Faceplate



Easy-Access Terminal Block



Pivoting Faceplate Assembly