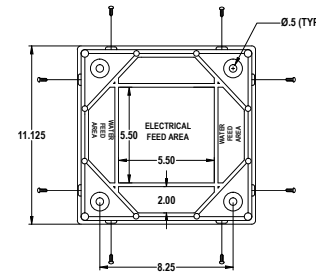


HARBOR LIGHT SS

Power Pedestal Model HLSS30100



STANDARD DIMENSIONS: 42.5" H 11.125" W 11.125" D

Marina Electrical Equipment has performed extensive research and design to create the most innovative and user-friendly power pedestal, the "Harbor Light SS." This pedestal truly represents modernization and ease-of-use. We have taken all that we have learned over the past 30+ years in this business to create a power pedestal that is exceptionally durable, practical, and clean-looking, as well as simple to install and maintain.



STANDARD FEATURES

- Intertek-ETL Listed, tested in accordance with Underwriters Laboratories-231 standards, CAN/CSA Standard C22.2 No.29 and NFPA 303
- Rugged, long-lasting stainless steel NEMA 3RX main housing
- Heavy-duty injection-molded polycarbonate top and lens assemblies
- Limited 1-Year Warranty
- Extra-wide back-lit receptacle faceplate for easier plug-in
- Highest quality twist-lock receptacles and circuit breakers
- Highest quality 100-Amp pin and sleeve receptacles (when 100-Amp receptacles are selected)
- Patented pivoting receptacle faceplate assembly, which simplifies field-maintenance tasks such as replacing circuit breakers, receptacles or meter current transformers
- Photocell-controlled LED light fixture with fuse protection
- 250-Amp rated copper stud-lug single phase 125/250V terminal block
- Clean-looking, flush-mounted access panels
- Newly designed, highly functional dual hose/cable brackets capable of holding min. 50' of standard 5/8" ID garden hose or 50' of 50-ampere, 4-wire shore power (S.O.) cord
- Durable polycarbonate mounting base plate which isolates the bottom housing from the dock surface
- Lockable polycarbonate weatherproof doors which shield the receptacles and circuit breakers from the elements while in use (as required by NFPA 303 and NEC Article 555)

OPTIONAL FEATURES

- Receptacle Options:
 - 20A, 125V Duplex GFCI
 - 20A, 125V L5-20R Twist-Lock Shorepower
 - 30A, 125V L5-30R Twist-Lock Shorepower
 - 50A, 125V SS-1 Twist-Lock Shorepower
 - 50A, 125/250V SS-2 Twist-Lock Shorepower
 - 100A, 125/250V Pin and Sleeve Shorepower
 - 100A, 125/250Y Pin and Sleeve Shorepower
 - 100A, 480V Pin and Sleeve Shorepower
- Ground fault protected circuit breakers
- Solid-state electric monitoring for sub-metering kWh consumption
- Wireless NUCORE™ remote meter reading
- Ground Fault Monitoring at each slip (patented)
- 250-Amp rated copper 3/8" stud-lug three phase
- 125/250V terminal block
- 250-Amp rated split terminal block
- 3/4" IPS ball valve hose bibs
- Hose bib vacuum breakers
- Water metering
- Phone, Cable TV, and/or Data ports
- Amber or Clear Polycarbonate Lens



Protected kWh Counter



Extra-Wide Back-Lit Receptacle Faceplate



Easy-Access Terminal Block



Pivoting Faceplate Assembly